

# CHRONODERM

## Gel Crème Yeux Rétinol

---

Single Centre, Open Label Clinical Trial in 15 Women aged 48-63 With Wrinkles at the Crow's foot (external angle of the eyelids) and Eye Bags (puffy eyes).

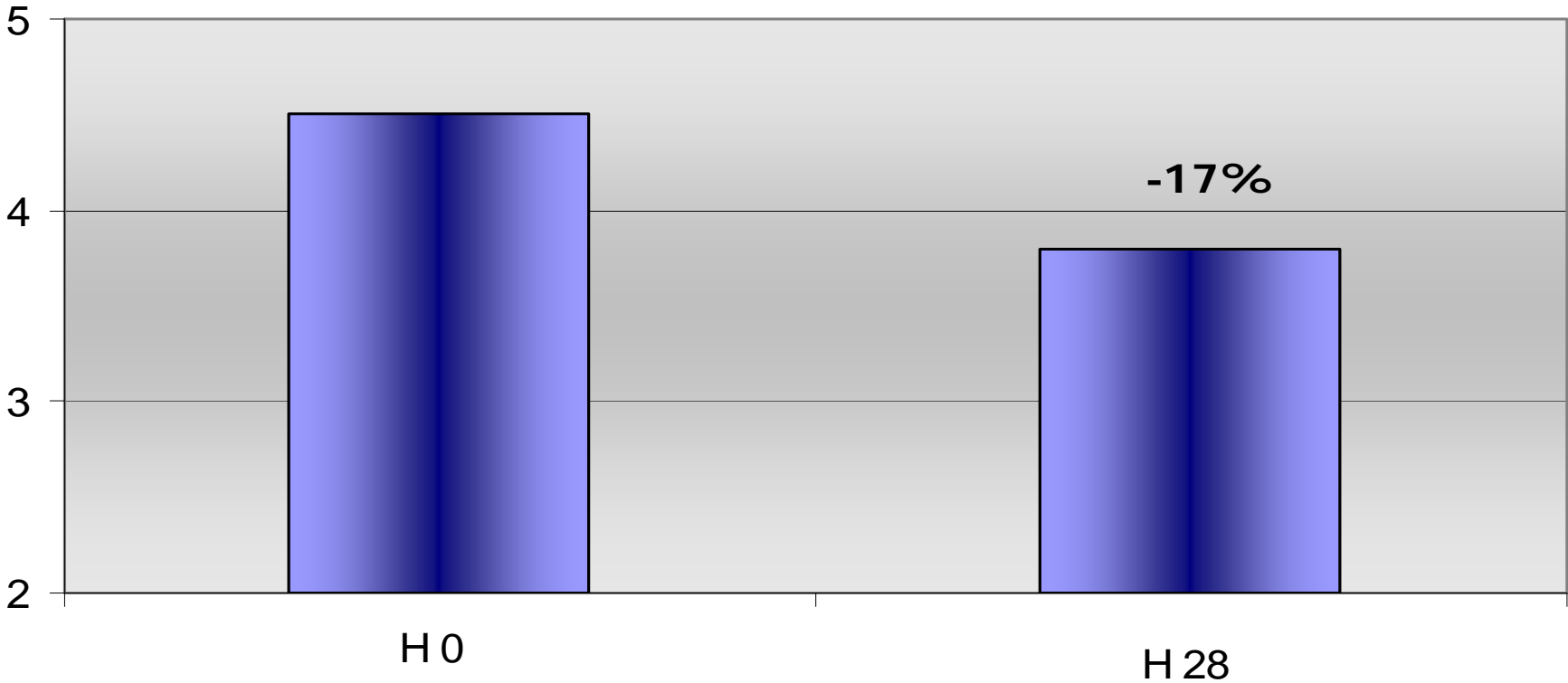
Daily use of CHRONODERM GEL CRÈME YEUX RÉTINOL for 28 days.

*Institut Dermatologique d'Aquitaine–Professor of Dermatology Claudine Hocke*

# CHRONODERM

## Gel Crème Yeux Rétinol

Total wrinkle surface area (mm<sup>2</sup>)

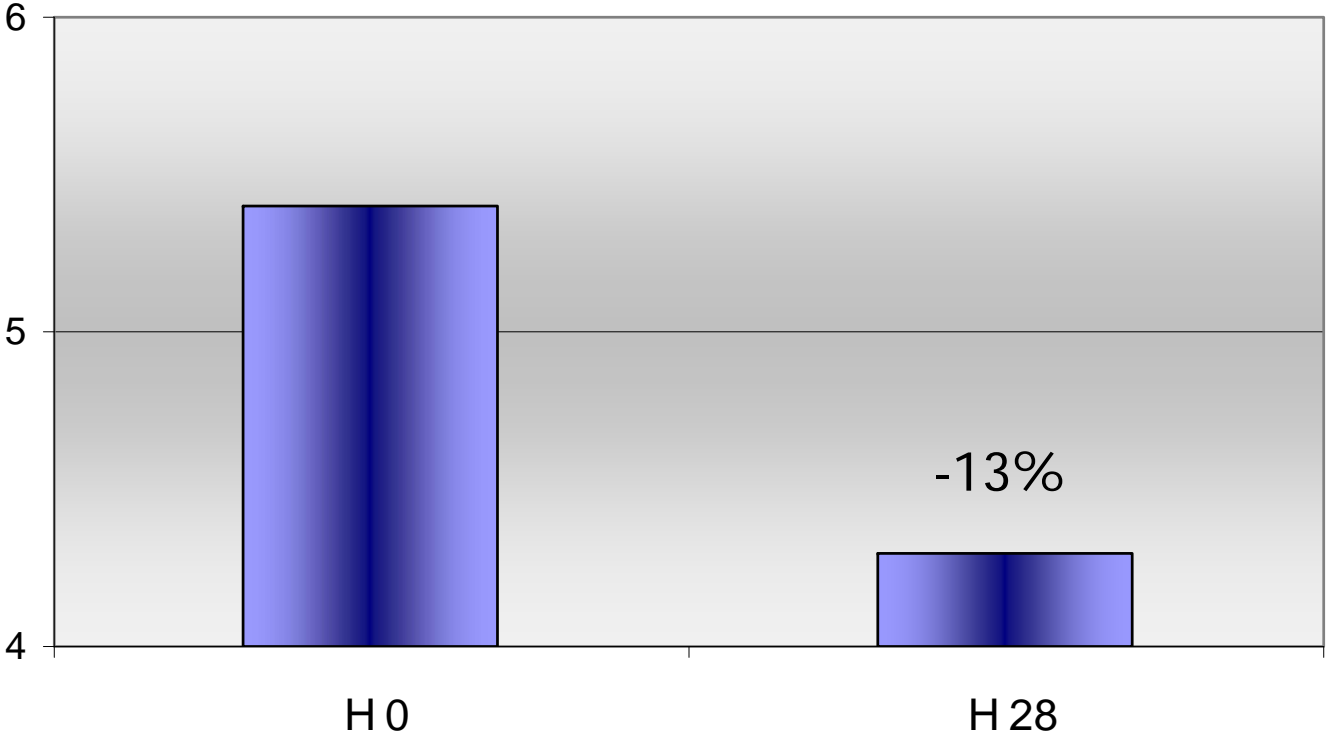


# CHRONODERM

## Gel Crème Yeux Rétinol

---

Total wrinkle length (mm<sup>2</sup>)

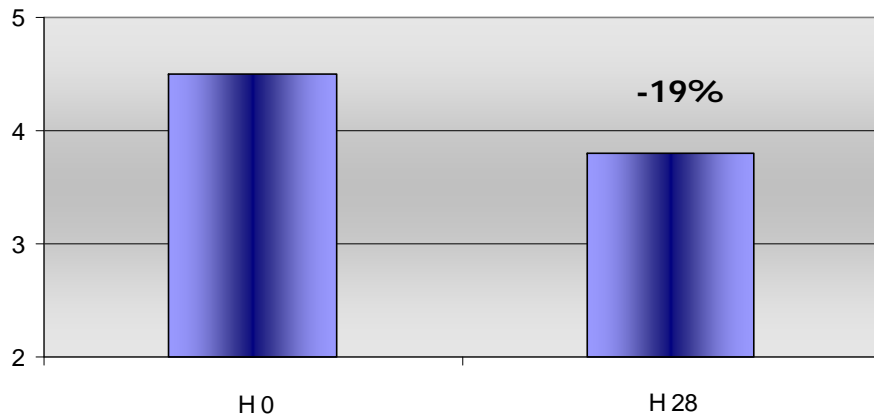


# CHRONODERM

## Gel Crème Yeux Rétinol

A statistically significant reduction was observed in:

Under Eye bags



Dark circles

